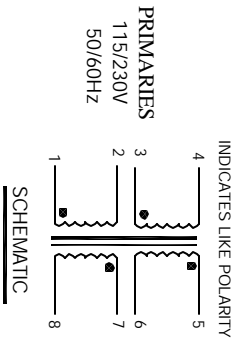


The information contained in this drawing is the sole property of CWS-Specialist. Any reproduction in part or whole without written permission is prohibited.

REVISION HISTORY

REV	ECN	DESCRIPTION	BY	DATE	CHK	DATE
A		PRODUCTION RELEASE	TKK	4/16/08	JLU	4/16/08



5 WHERE SHOWN, USING A PERMANENT MARKING METHOD
MARK PART NUMBER AND REVISION

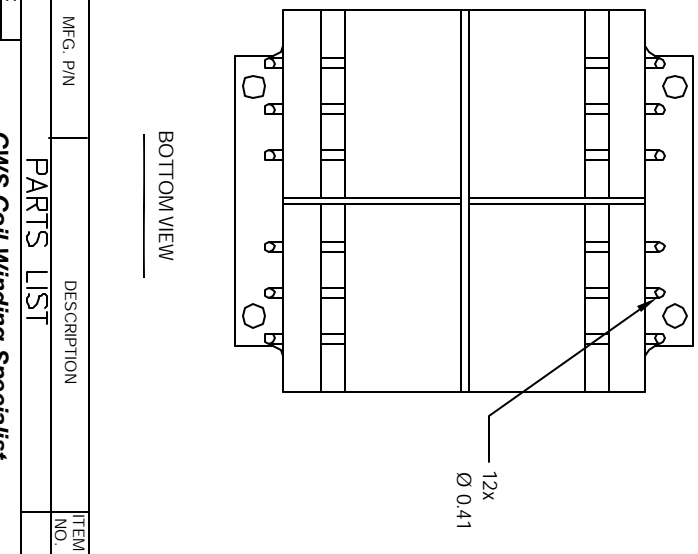
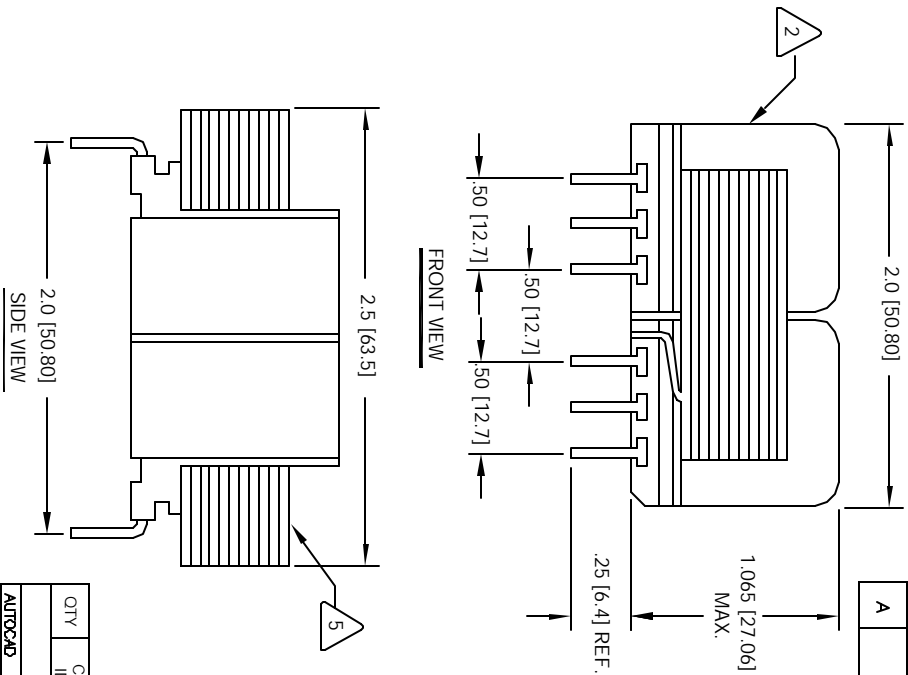
4 CONTACT CWS FOR MORE INFORMATION
BUT NOT CERTIFIED OR TESTED BY THESE AGENCIES
DESIGNED TO MEET UL, CSA, TUV STANDARDS,
CONCENTRIC CONSTRUCTION

3 VOLT-AMPERES RATING = 12 VA
SPECIFICATIONS @ 25°C

2 WIRE: UL RECOGNIZED 130°C RATED MAGNET WIRE
CWS BYTE-MARK OR OTHER APPROVED PART
CORE: 50 Hz / 60 Hz LAMINATION

1 BOBBIN RATING CLASS B (130°C) REQUIRED
MATERIAL: UL RECOGNIZED 94V-0 FOR FLAMMABILITY

NOTES: UNLESS OTHERWISE SPECIFIED,
READ NOTES FROM BOTTOM TO TOP



UNLESS OTHERWISE SPECIFIED

DIMENSIONS AND TOLERANCES PER ANSI Y14.5M	FRAM	DATE
ALL DIMENSIONS ARE IN INCHES AND DIMETERS	TKK	4/15/05
TOLERANCE INCHES: .000-.005 .005-.015 .015-.030 .030-.127 .127 .300-.500	JLU	4/15/05
TOLERANCES METERS: .000-.015 .015-.030 .030-.076 .076-.193 .193 .381-.508	KSLM	4/15/05
ANGLE PROJECTION	JLU	4/15/05

DO NOT SCALE DRAWING

QTY	CODE	IDENT	MFG. P/N	DESCRIPTION	ITEM NO.
				PARTS LIST	
	AUTOCAD		X		
	SOLIDWORKS				
	SIGN				
	FRAM	DATE		CWS Coil Winding Specialist	
	TKK	4/15/05		1510 E. Edinger Ave. Unit B, Santa Ana, CA 92705	
	JLU	4/15/05		Power Transformer	
	KSLM	4/15/05		EPL Series, 12VA, 1.065" High	
	JLU	4/15/05		EPL-12-230	REV A
	JLU	4/15/05		SCALE: B	
				SIZE: B	
				SCALE: Z=1	
				SHEET 1 OF 1	